

Goodwood

– Premium Plus



1



1

Eldercare Goodwood introduces the new standard in aged care, providing a state-of-the-art facility that prioritises the wellbeing and comfort of its residents. Located on Victoria St, Goodwood, this impressive 100-bed aged care home spans over 10,000 square metres, and is set to open its doors in 2025.

This purpose-built development embodies the best practices in aged care living standards. Every room offers a spacious 26 sqm layout, with state-of-the-art technology for safety and entertainment. Resident rooms are in small groups where living spaces are separated from communal areas. This commitment to ample living space ensures residents have room to relax, maintain their privacy, and create a sense of home.

The design thoughtfully incorporates various living spaces to enhance socialisation, relaxation, and engagement. These include a well-equipped kitchen, a comfortable dining area, inviting lounge spaces, peaceful retreats for quiet moments, a designated TV area for entertainment, and versatile activity spaces. Residents can socialise over a cup of tea or coffee at the café, enjoy the tranquil atmosphere in a beautiful conservatory that overlooks the serene rear gardens, or be serenaded by the baby grand piano in the foyer.

Eldercare Goodwood goes beyond the physical aspects of the facility by offering a comprehensive model of care that considers the varying needs, preferences, interests, levels of ability and life stages of its residents, as well as specialist spiritual, palliative, dementia and wellbeing programs.

ADDRESS

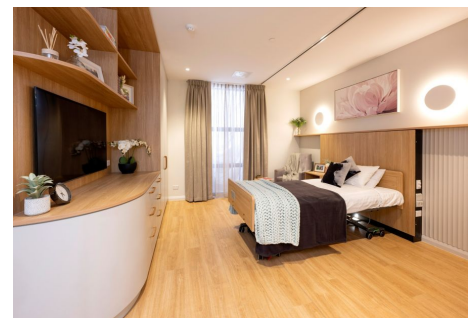
7-21 Victoria St , Goodwood SA 5034

General Inclusions

- Contemporary timber bed furnishings and matching fittings including an electric adjustable high/low bed, bedside cabinet and overway table
- A portable call bell solution enabling access to 24 hour nursing care through a variety of equipment types
- A built-in wardrobe which includes hanging space and a chest of drawers with a lockable drawer
- Modern, private ensuite consists of a toilet, shower, vanity basin and vanity cabinet
- Reverse-cycle heating and cooling with individual temperature control
- Integrated resident room digital entertainment
- Wall-mounted television (55 inch)
- Phone connection available

Goodwood - Premium Plus Inclusions

- Kitchenette
- Private ensuite
- Floor to ceiling windows
- Rooms are approx. 26 sq. m



Premium Plus at Goodwood

Accommodation

To enter residential care, you will be required to pay accommodation costs and care fees. We also provide Additional and/or Extra Services packages depending on the facility you choose.

Refundable Accommodation Deposit (RAD)	Up to \$900,000
Maximum Permissible Interest Rate (MPIR)	8.17%
Daily Accommodation Payment (DAP)	Up to \$201.45 per day

For those that are required to contribute towards their accommodation costs there are three options:

1. A fully refundable accommodation deposit (RAD)
2. Non-refundable daily accommodation payments (DAP)
3. A combination of both

The RAD is based on the published price of your preferred room type.

The DAP is calculated from the RAD amount of your preferred room type and is broken down into a daily payment; similar to rent. A government-prescribed interest rate, called the Maximum Permissible Interest Rate (MPIR), applies to this payment.

EXAMPLE 1	EXAMPLE 2
RAD \$150,000	RAD \$250,000
DAP \$167.88 per day	DAP \$145.5 per day

Residents with limited financial means may have part, or all, of their accommodation costs paid for by the Australian Government.

Care

The care fee covers day-to-day assistance from carers and clinical staff, wellbeing activities and services such as catering, laundry, cleaning and gardening. It is made up of:

1. Basic Daily fee:

Every person entering residential care pays a Basic Daily fee which is set at 85% of Centrelink's single, full Age Pension.

2. Means-tested care fee:

An additional contribution towards the cost of your care based on your asset and income levels. This fee is set by the Department of Human Services when they receive your completed Request for a Combined Assets and Income Assessment form.

Additional services

To complement our high quality service, we provide an Additional Services package that includes a variety of features for your added care and comfort. [Additional Services flyer](#) for more information.

These pricing arrangements apply to new residents entering care on or after July 1, 2014. The agreed Daily Accommodation Payment may be deducted from the Refundable Accommodation Deposit in order to meet an agreed amount of accommodation payment. This will result in additional interest amounts being charged on the amount deducted. Residents or their representatives may wish to seek independent financial advice regarding which option suits their specific financial circumstances.

Prices are current as at April 22, 2025, 1:24 am and are subject to change without notice.

MPIR rate: Currently 8.17% and is updated quarterly by the Federal Government.